



SW Chilterns Community Board: Public Health Update

Dr Sarah Winchester
Consultant in Public Health
Buckinghamshire Council



To cover this evening

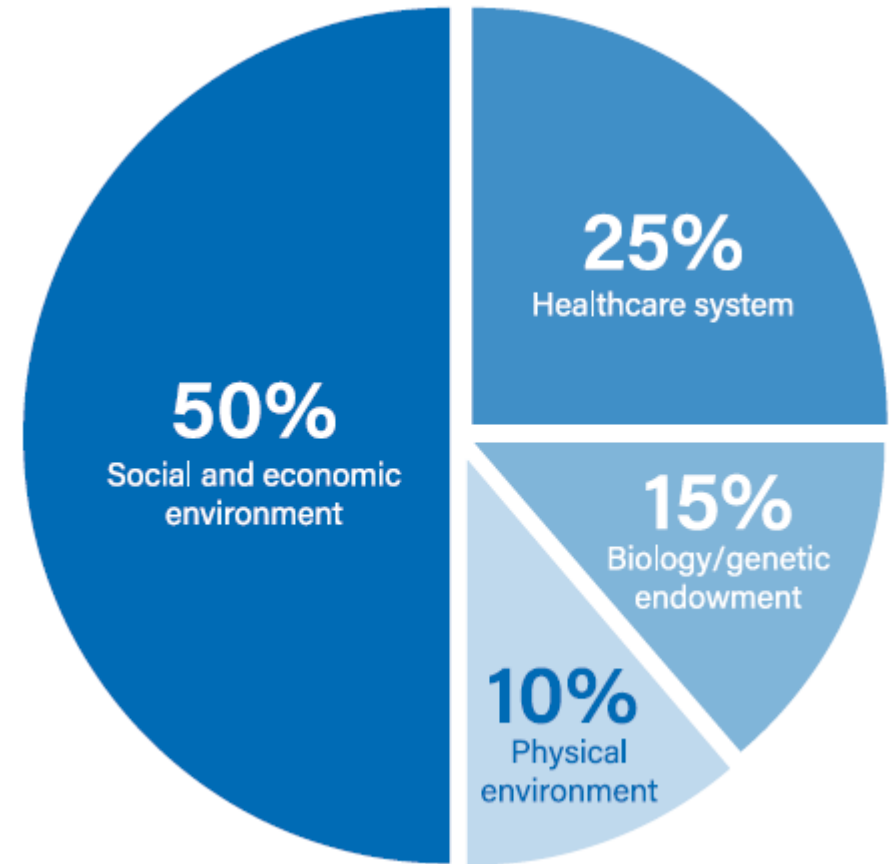
1. What is Public Health?
2. Health and Wellbeing Board Strategy
3. Director of Public Health Annual Report 2022
4. Community Board Profiles
5. Winter illnesses – covid and flu

What is public health?

Health is determined by a whole range of factors.

Public health is *“the art and science of preventing disease, prolonging life and promoting health through the organized efforts of society”*

Acheson 1988



Health and Wellbeing Strategy

Health & Wellbeing Board
Buckinghamshire

Start Well

Live Well

Age Well

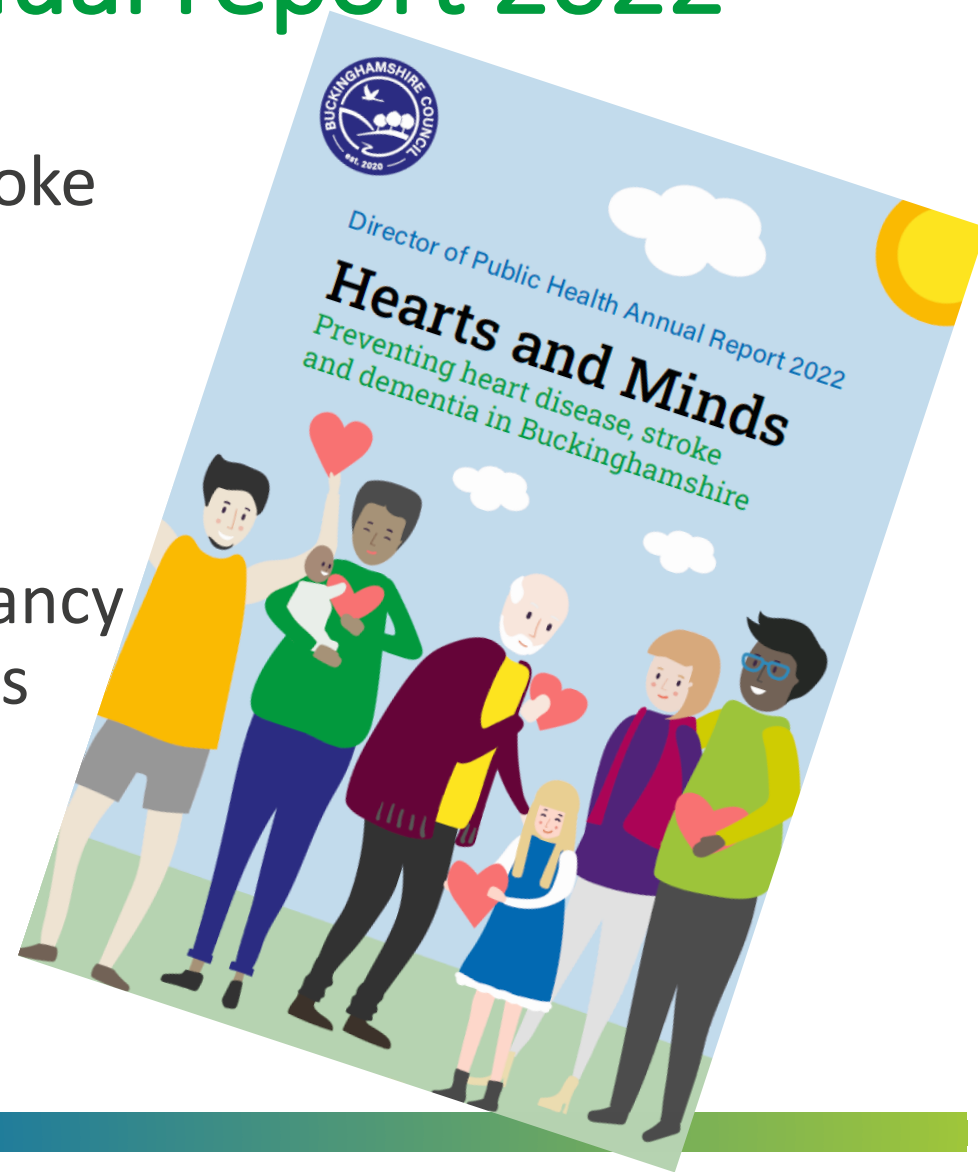
Key themes:

- Obesity and physical activity
- Cardiovascular disease
- Mental health

[Buckinghamshire Joint Local Health and Wellbeing Strategy 2022 to 2025 | Buckinghamshire Council](#)

Director of Public Health Annual report 2022

- Cardiovascular disease – heart disease, stroke and second commonest type of dementia
- Causes 1 in 5 of all deaths in Bucks
- Major contributor to the gap in life expectancy between our most and least deprived areas
- Most can be prevented



Community board profiles

Population



There are 37,508 people living in the South West Chilterns Community Board area

Health and wellbeing



South West Chilterns Community Board has a higher life expectancy for men (83.5 years) compared to the Buckinghamshire average of 81.8 years (England average 79.8). The life expectancy for women is higher (86.1 years) compared to the Buckinghamshire average of 85.1 years (England average 83.4).

Vulnerable groups



7.5% of children are living in poverty in the South West Chilterns Community Board area, compared with 9.5% across Buckinghamshire

Education and skills



15.6% of people have no qualifications in the South West Chilterns Community Board area compared with 16.8% across Buckinghamshire

Housing



1.4% of households lack central heating in the South West Chilterns Community Board area, compared with 1.4% across Buckinghamshire

Economy



4.1% of people are in receipt of unemployment benefit (JSA and UC) in the South West Chilterns Community Board area compared with 4.6% across Buckinghamshire

[Local Profiles \(healthandwellbeingbucks.org\)](http://healthandwellbeingbucks.org)

Local findings



Cancer

4.3%



Coronary Heart Disease

3.3%



Dementia

0.9%



Heart Failure

0.9%



Hypertension

15.8%

Please note GP data not age-standardised –
older populations will have higher rates of most diseases

All other crime indicators SW Chilterns better than county average

Winter illnesses – COVID and flu

Flu:

- Cases of flu are starting to rise across England
- Over 177,000 flu vaccinations have been delivered by end of October in Buckinghamshire
- Good uptake in over 65s, but would like to increase in 2-3 year olds

COVID:

- 1 in 30 people in South East estimated to have COVID and numbers still rising (mid-Oct)
- Rising cases not translating into hospital admissions as previously – largely due to vaccine
- 57% of residents aged 50+ had their booster by 7th November in Buckinghamshire
- SW Chilterns CB has above county-average uptake (61%)

Vaccination sites listed [here](#)

National booking system available [here](#)

How can the CB help to meet ambitions?



For more information

- Health and Wellbeing Board Strategy available at:
[Buckinghamshire Joint Local Health and Wellbeing Strategy 2022 to 2025 | Buckinghamshire Council](#)
- Director of Public Health annual report available at:
[Director of Public Health Annual Report 2022 \(buckinghamshire-gov-uk.s3.amazonaws.com\)](#)
- Community board profiles are available at:
[https://www.healthandwellbeingbucks.org/local-profiles](#)
- COVID booster vaccine bookings:
[Book or manage a coronavirus \(COVID-19\) vaccination - NHS \(www.nhs.uk\)](#)

Please get in touch – our public health community board link is
stephanie.Moffat@buckinghamshire.gov.uk